



# GAT MONTHLY MEMBERSHIP PROGRESS REPORT

Results as of: 6/30/2023

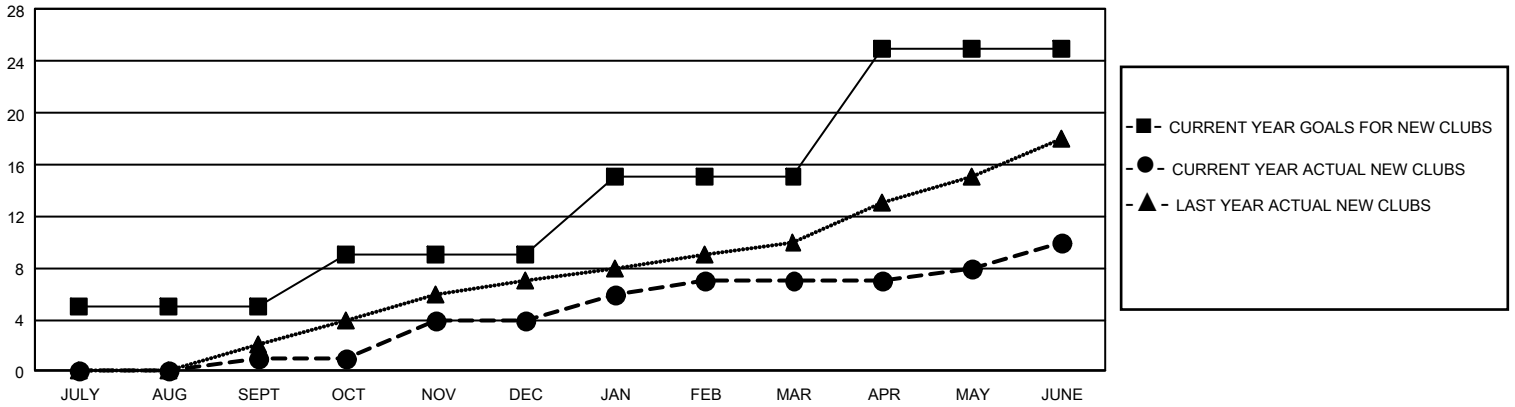
## GMT Constitutional Area 4, Group B

REPORT DOES NOT INCLUDE CLUBS IN UNDISTRICTED AREAS.

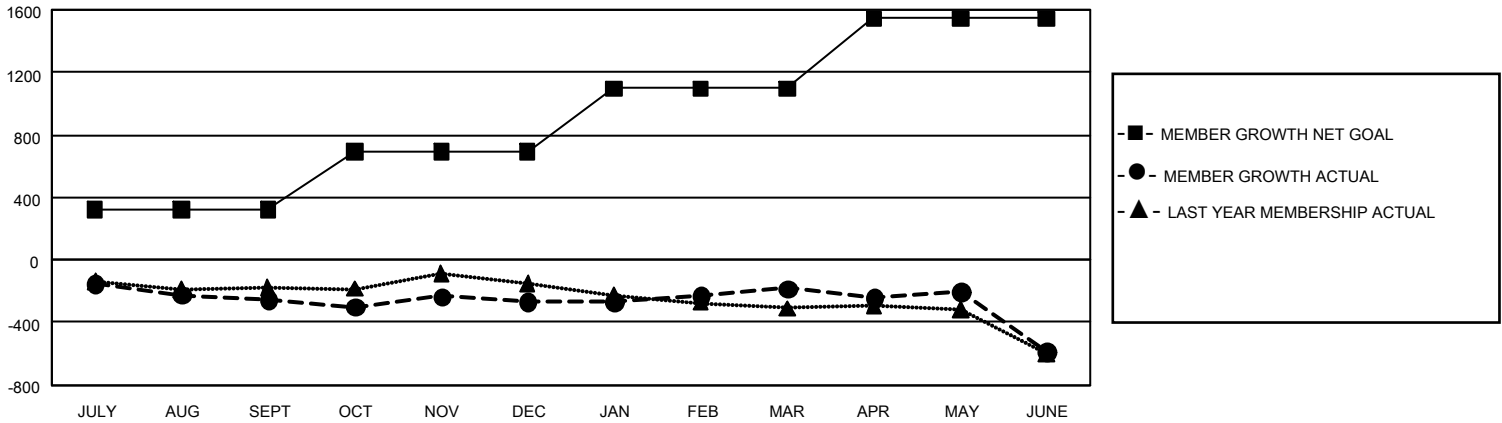
Clubs			
RESULTS FOR 2022-2023			
QUARTER	NEW CLUB GOAL	NEW CLUBS	DROPPED CLUBS
JULY/AUG/SEPT	15	1	4
OCT/NOV/DEC	12	3	2
JAN/FEB/MAR	18	3	3
APR/MAY/JUNE	30	3	9

Members			
RESULTS FOR 2022-2023			
QUARTER	MEMBER GROWTH NET GOAL	MEMBER GROWTH ACTUAL	DROPPED MEMBERS ACTUAL (including transfers)
JULY/AUG/SEPT	322	591	784
OCT/NOV/DEC	368	815	743
JAN/FEB/MAR	407	940	800
APR/MAY/JUNE	449	1,118	1,414

GOALS AND ACTUAL NEW CLUBS CUMULATIVE



GOALS AND ACTUAL MEMBERS CUMULATIVE



DROPPED CLUBS: 18	1,401 CLUBS OF 2,127 ADDED 1 OR MORE NEW MEMBERS	<b>GENDER DISTRIBUTION</b>	
	<u>DROPPED MEMBERS</u> DECEASED 863 CLUB CANCELLED 125 OTHER 2,747 <b>TOTAL 3,735</b>	<a href="#">CLICK HERE FOR CUMULATIVE MEMBERSHIP DATA</a>	MALE 58,449 (83.53%)
FEMALE 11,509 (16.45%)			
		NON BINARY 0 (0.00%)	
		PREFER NOT TO ANSWER 14 (0.02%)	
		TOTAL FAMILY UNIT MEMBERS 784	
		FAMILY MEMBERS PAYING HALF DUES 355	